

Batyline

[Stam]Skin Top & Club | A unique durability

| *Una durabilidad única*



Batyline | [Stam]Skin



Batyline | [Stam]Skin

Easy: high flexibility of the material for a perfect upholstery quality

Fácil: gran flexibilidad del material para una calidad de tapizado perfecta

Colorful: a large palette of 33 neutral and vibrant colors

Colorido: una amplia oferta de 33 colores neutros y vibrantes

Robust: a multilayer coating and performance characteristics ensuring a long life span in intensive use applications

Robusto: un revestimiento multicapa y unas características de rendimiento que garantizan una larga vida útil en aplicaciones de uso intensivo



Batyline | [Stam]Skin

The Batyline [Stam]Skin range features high performance faux leather solutions for outdoor and indoor furniture upholstery.

The unique multilayer coating of Top and Club ensures durability and exceptional resistance to abrasion and UV rays. These two products are perfect solutions for the demanding Marine, Residential and Contract applications.

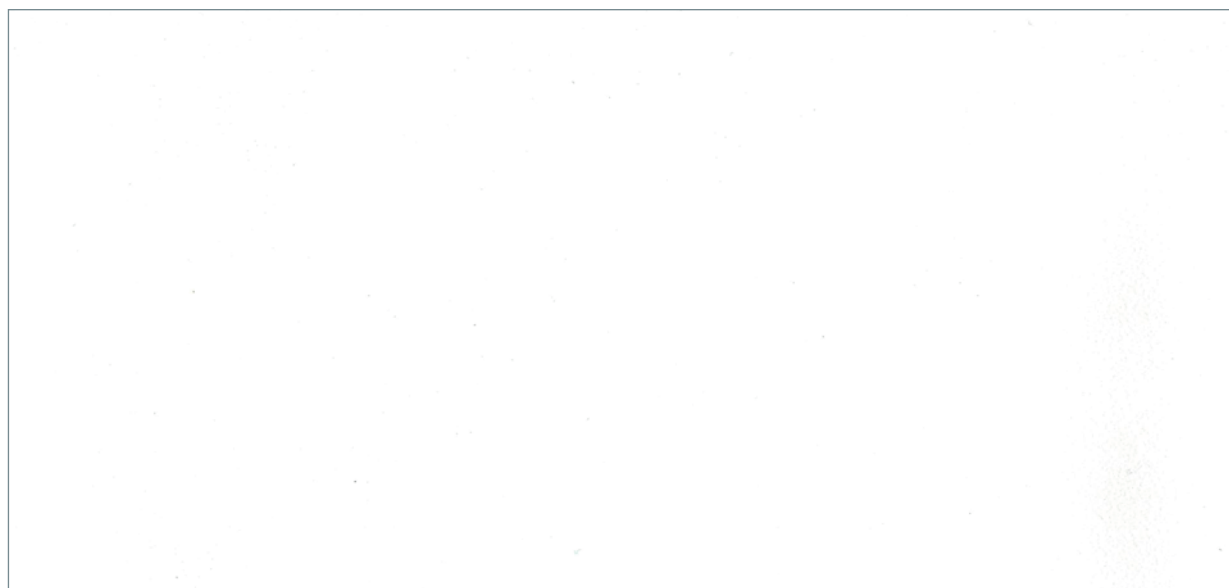
La gama Batyline [Stam]Skin ofrece soluciones de piel sintética de alto rendimiento para la tapicería del mobiliario exterior e interior.

El exclusivo revestimiento multicapa de Top y Club garantiza la durabilidad y una excepcional resistencia a la abrasión y a los rayos UV. Estos dos productos son soluciones perfectas para las exigentes aplicaciones Náuticas, Residenciales y de Contract.



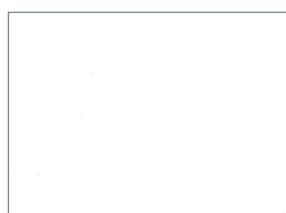
Batyline [Stam]Skin

Top



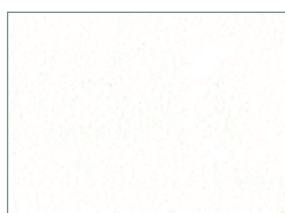
Marble
Mármol

F4340-10120



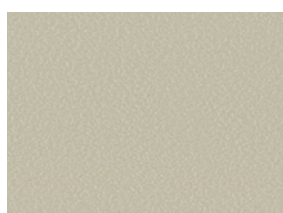
Marble white
Mármol blanco

F4340-10120



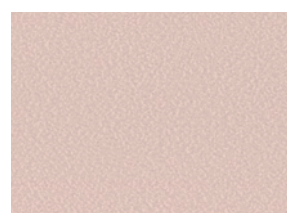
Sand
Arena

F4340-5029



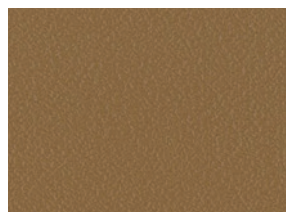
Sahara
Sáhara

F4340-20279



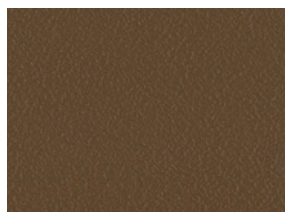
Blush
Blush

F4340-20293*



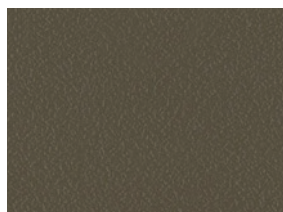
Alezan
Pardo

F4340-20286



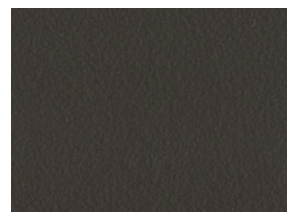
Brandy
Brandy

F4340-20278*



Havana
Habana

F4340-20285



Chocolate
Chocolate

F4340-20129



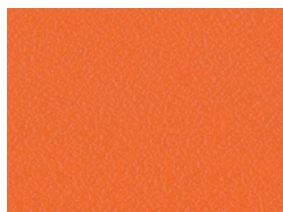
Yellow
Amarillo

F4340-20299



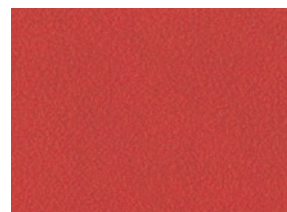
Golden
Oro

F4340-20281



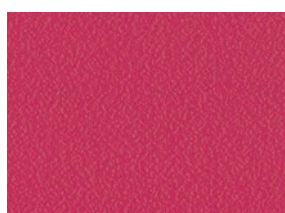
Capucine
Capucine

F4340-20280



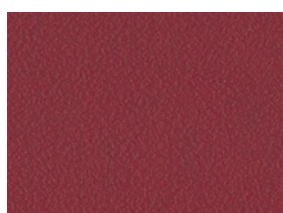
Cinnabar red
Rojo cinabrio

F4340-07478



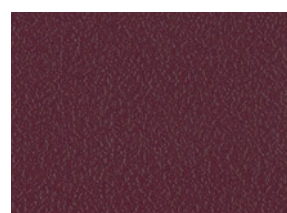
Peony
Peonía

F4340-20287



Carmine red
Rojo carmín

F4340-07479



Burgundy
Borgoña

F4340-20283

*Colours available on request - Colores disponibles previa solicitud



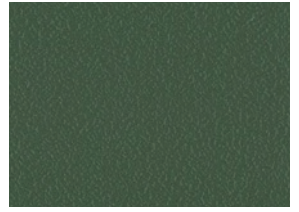
Lichen
Liquen **F4340-20291***



Bamboo
Bamboo **F4340-20300**



Cactus
Cactus **F4340-20296**



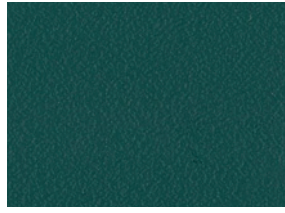
Olive
Oliva **F4340-20253**



Taupe
Topo **F4340-20237**



Brown green
Musgo **F4340-20241**



Cedra
Cedro **F4340-20282**



Adriatic
Adriático **F4340-20284**



Baltic
Báltico **F4340-20290***



Turquoise
Turquesa **F4340-20294**



Oslo
Azul oslo **F4340-20289**



Capri
Capri **F4340-20288**



Ink
Azul indigo **F4340-10295**



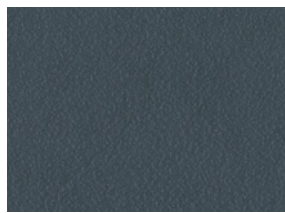
Sari
Sari **F4340-20295***



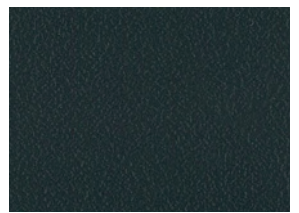
Mist
Niebla **F4340-20161**



Mouse grey
Gris ratón **F4340-07432**



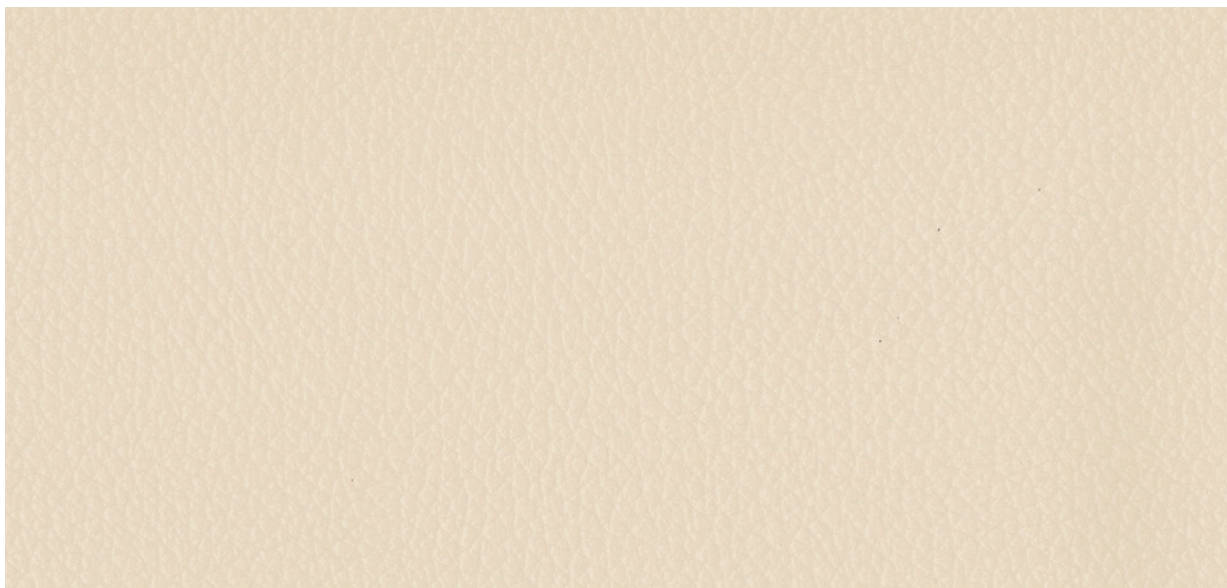
Pebble
Guijarro **F4340-07445**



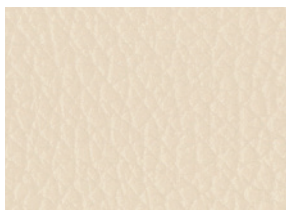
Black
Negro **F4340-00002**

Batyline [Stam]Skin

Club



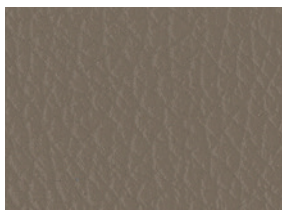
Sand Arena **F4340-5029P**



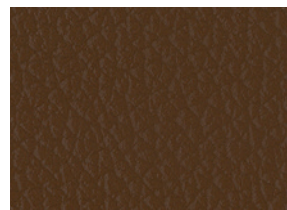
Sand Arena **F4340-5029P**



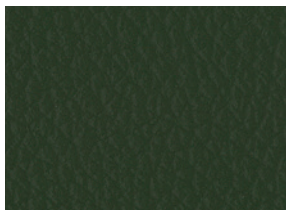
Sahara Sáhara **F4340-20279P**



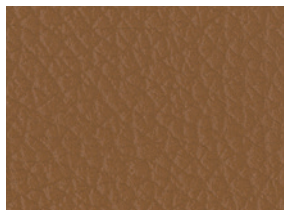
Taupe Topo **F4340-20237P**



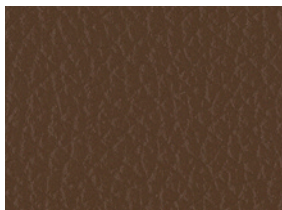
Brandy Brandy **F4340-20278P**



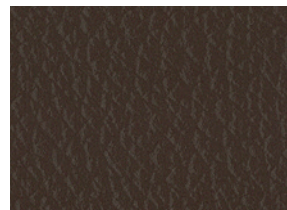
Olive Oliva **F4340-20253P**



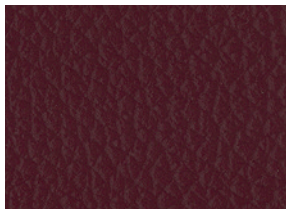
Alezan Pardo **F4340-20286P**



Havana Habana **F4340-20285P***



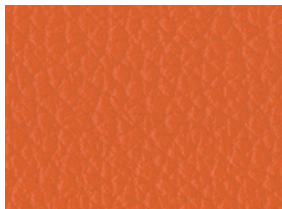
Chocolate Chocolate **F4340-20129P**



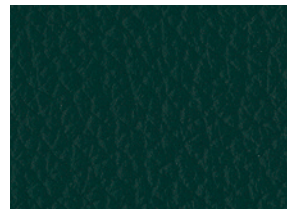
Burgundy Borgoña **F4340-20283P***



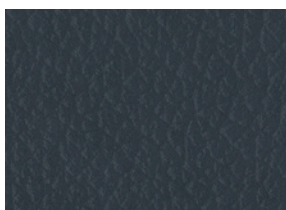
Golden Oro **F4340-20281P***



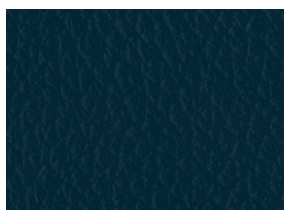
Capucine Capucine **F4340-20280P**



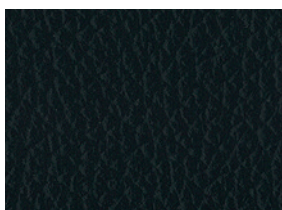
Cedra Cedro **F4340-20282P***



Pebble Guijarro **F4340-07445P**



Adriatic Adriático **F4340-20284P**



Black Negro **F4340-00002P**

*Colours available on request - Colores disponibles previa solicitud

Batyline | [Stam]Skin

Batyline [Stam]Skin Top F4340	Batyline [Stam]Skin Club F4340
--	---

Technical properties - Características técnicas

Standards - Normas

Composition - Composición	Multi-layer composite - Compuesto multicapa	
Base cloth - Soporte	Polyamide-jersey - Poliamida jersey	
Width - Ancho	140 cm • 55.1 in	
Weight - Peso	780 g/m ² • 23 oz/sq. yd	EN ISO 2286-2
Thickness - Espesor	1.0 mm – 1.2 mm • 1,000 microns - 1,200 microns	EN ISO 5084

Physical properties - Propiedades físicas

Elongation under load 125 N/5 cm (warp/weft) Alargamiento bajo carga 125 N/5 cm (urdimbre/trama)	>35% / >55%	EN ISO 1421
Tensile strength (warp/weft) Resistencia a la tracción (urdimbre/trama)	>440 N/5 cm / >280 N/5 cm >96.9 / >62.9 lbs/2 in	EN ISO 1421
Tear strength (warp/weft) Resistencia al desgarro (urdimbre/trama)	>25 N / >15 N >6 lbs / >3 lbs	EN ISO 13937-1
Flexing resistance Resistencia a la flexión	400,000 cycles 400 000 ciclos	EN ISO 7854
Abrasion resistance Resistencia a la abrasión	>120,000 cycles >120 000 ciclos	EN ISO 5470-2 Martindale
Weather resistance Resistencia a la intemperie	GS≥4 at 1,250 h GS≥4 a 1250 h	ASTM G154
Mold resistance Resistencia al moho	Degree 0, excellent Grado 0, excelente	EN ISO 846-A
Extreme working temperatures Temperaturas extremas de uso	-20°C / +70°C -4°F / +158°F	

Flame retardancy - Reacción al fuego

Rating Clasificación	US	Pass - Conforme Class 1 - Clase 1	NFPA 260 CAL TB 117
	IT	Class 2 - Clase 2	UNI 9177-87
	CH	5.3	SN 198898 - VKF/AEAI
	DE	Class F1 - Clase F1	DIN 53438-3
	FR	M2	NF P 92-507
		F4	NF P 16-101-102
	UK	Pass - Conforme	CRIB 5 BS 585
	AU	Pass - Conforme	AS/NZS 1530-3
		Group 2 - Grupo 2	AS/NZS 3837
	Aeronautical test Test aeronáutico	Pass Conforme	FAR/JAR 25-853/855
	Test cigarette / match Test cigarrillo / cerilla	No fire Sin ignición	EN 10211&2
	Marine test Test marino	Pass Conforme	IMO MSC.307(88) (2010FTP Code) Annex1Part 8

Management system - Sistemas de gestión

Quality - Calidad: ISO 9001 • Environment - Medio ambiente: ISO 14001

Certifications, labels, warranty - Certificaciones, etiquetas, garantía

5-year warranty
5 años de garantía

Smart coating technology
Tecnología Smart coating



¹ Summarizes the group's CSR project focused on human, to align economic performance and positive impact.

¹ Resume el proyecto de RSC del grupo centrado en lo humano, para alinear rendimiento económico e impacto positivo.

Quoted technical characteristics are average values with a +/-5% tolerance. Our products are subject to improvements resulting from technical developments and we reserve the right to modify their characteristics at any time. The purchaser of our products is responsible for checking the above data. A maintenance and spot cleaning guide is available on request.

Las características técnicas indicadas son valores medios con una tolerancia de +/-5%. Nuestros productos están sujetos a mejoras derivadas del desarrollo técnico y nos reservamos el derecho de modificar sus características en cualquier momento. El comprador de nuestros productos tiene la responsabilidad de comprobar los datos anteriores. Se puede solicitar una guía de mantenimiento y limpieza de manchas.